

Supplementary Materials

Supplementary Material A. Video of *C. elegans* feeding on *E. coli* OP50 lawn treated with khat ethanol extract (KEE), cathinone, cathine, sibutramine (positive control) and water (negative control) under Leica DM750 microscope with a built-in camera connected to the computer using the program Leica LAS EZ 3.4 <https://drive.google.com/drive/folders/1rgkMJmpL0R-xHCA6yySlyPNwrVBr6V4M>

Supplementary Material B.

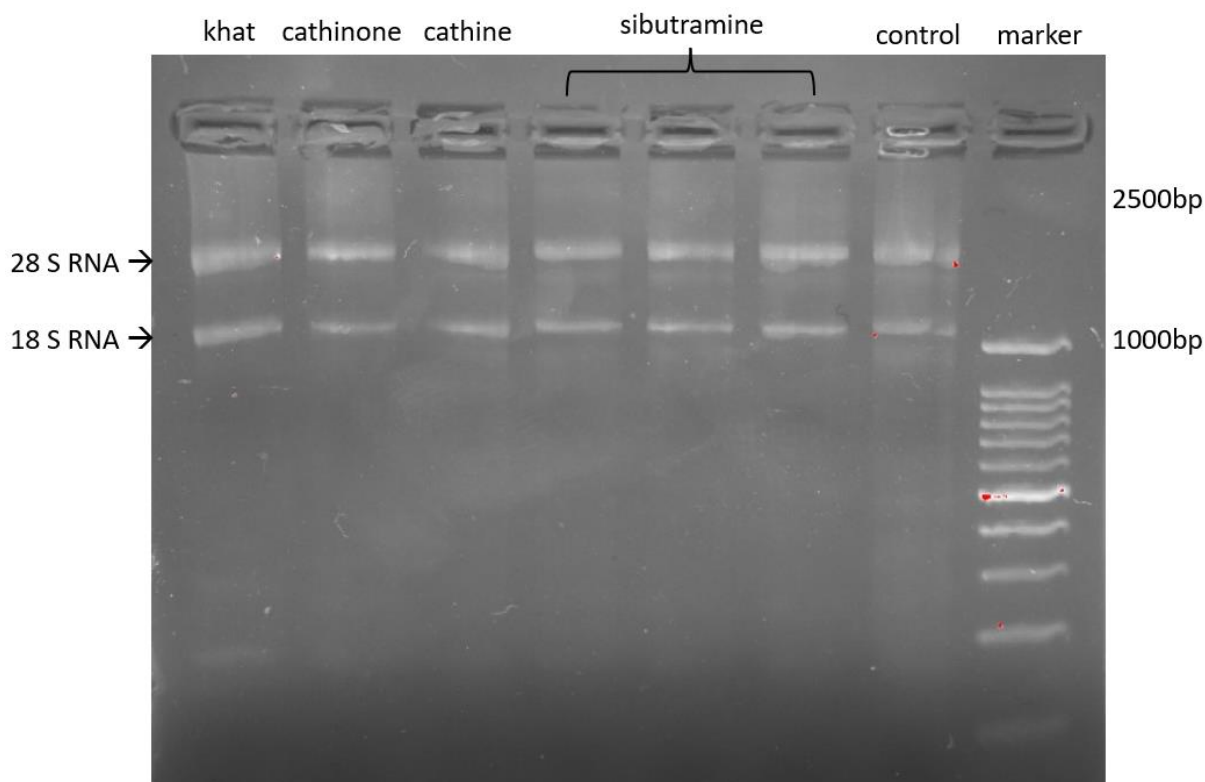


Figure B. RNA integrity test by denaturing agarose gel electrophoresis. Visualisation of intact RNA bands for 28 S RNA and 18 S RNA. Each lanes contain 1 μ g of total RNA from *C. elegans* treated with KEE, cathinone, cathine, sibutramine and control (water).